

# Tudor

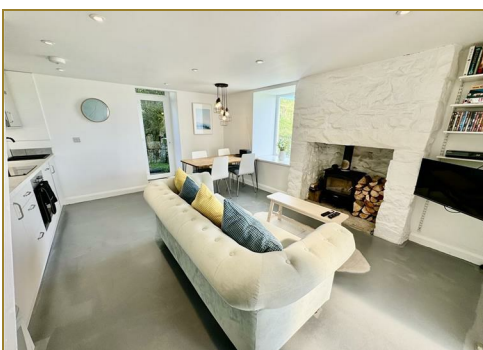
syrfewyr siartredig | gwerthwyr eiddo | rheolwyr meddiannau  
chartered surveyors | estate agents | property managers



## 5 Fron Hyfryd Terrace, Llithfaen, LL53 6NT

**£169,950**

- End of Terrace Cottage
- Small Rural Village
- 2 Bedrooms & Attic Bedroom
- Modernised & Improved
- Elevated Position with Spectacular Views
- Open Plan Living & Conservatory





# 5 Fron Hyfryd Terrace, Llithfaen, LL53 6NT

Tudor Estate Agents & Chartered Surveyors are favoured with instructions to offer for sale this delightful end of terrace cottage, presently used as a Holiday Let, situated on the outskirts of the village and occupies an elevated position with spectacular views over open countryside and Cardigan Bay beyond.

Llithfaen is a small rural village on the north coast of the glorious Llyn Peninsula and is close to Nant Gwrthelyn the picturesque Welsh language centre and is only about 7 miles to Pwllheli the market town for the area.

The comfortable accommodation is attractively decorated throughout and briefly comprises of the following: -  
Porch/Utility. Open Plan Kitchen/Diner/Lounge. Conservatory. Shower room. Two bedrooms and Attic Bedroom. Front patio garden with steps leading down to lawn. Small rear yard.

\*Contents available at a price to be agreed

## GROUND FLOOR

### Porch/Utility 5'8 x 3'11 (1.73m x 1.19m)

Front door. Plumbing for washing machine. Door to:

### Open Plan Kitchen/Diner/Living 13'5 x 16'2 (4.09m x 4.93m)

Underfloor heating powered by Air Source Heat Pump. Kitchen units with sink unit. Door to:

### Conservatory 8'3 x 8'6 (2.51m x 2.59m)

Views. Tiled floor. Sliding patio door to patio and garden.

## FIRST FLOOR

### Landing

### Rear Bedroom 7'1 x 8'10 (2.16m x 2.69m)

Radiator.

### Shower Room/Toilet

Shower cubicle. Washbasin. Low level w.c. Towel radiator.

### Front Bedroom 10'9 x 7'0 (3.28m x 2.13m)

Radiator. Views. Cylinder cupboard.

## ATTIC BEDROOM

Accessed by fixed ladder. Velux roof light. Radiator. Pine boarded walls and ceiling.

Attic bedroom approved by Building Control.

## OUTSIDE

Garden to the front with paved patio enjoying fantastic views.

## SERVICES

We understand that mains water, electricity and drainage are connected to the property. Heating by Air Source Heat Pump located in the small rear yard. Prospective purchasers should make their own enquiries as to the suitability and adequacy of these services.

## TENURE

We understand the property is freehold with vacant possession available on completion.



# Tudor

Plas Y Ward, Y Maes, Pwllheli, Gwynedd, LL53 5DA

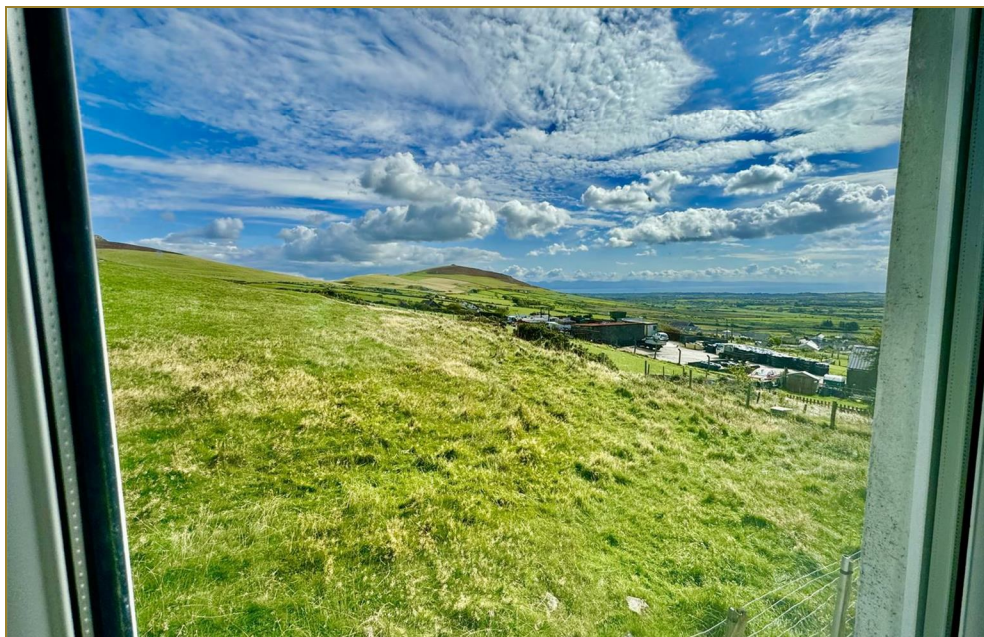
T: 01758 701 100

E: [info@huwtudor.co.uk](mailto:info@huwtudor.co.uk)

[www.huwtudor.co.uk](http://www.huwtudor.co.uk)



## 5 Fron Hyfryd Terrace, Llithfaen, LL53 6NT



# Tudor

Plas Y Ward, Y Maes, Pwllheli, Gwynedd, LL53 5DA

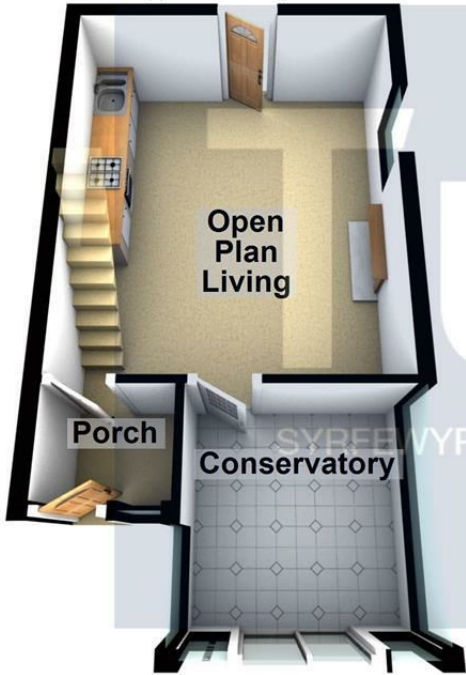
T: 01758 701 100

E: [info@huwtudor.co.uk](mailto:info@huwtudor.co.uk)

[www.huwtudor.co.uk](http://www.huwtudor.co.uk)

# 5 Fron Hyfryd Terrace, Llithfaen, LL53 6NT

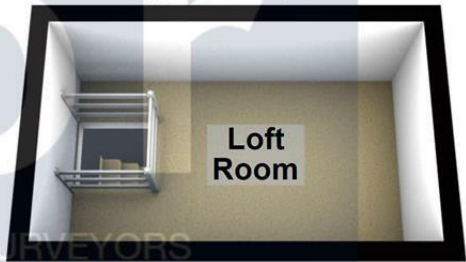
**Ground Floor**  
Approx. 311.6 sq. feet



**First Floor**  
Approx. 216.6 sq. feet



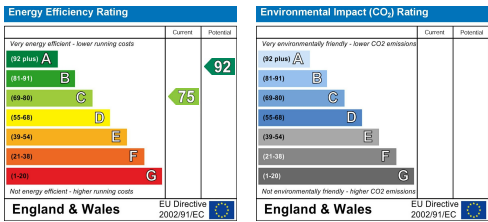
**Second Floor**  
Approx. 104.8 sq. feet



Total area: approx. 633.0 sq. feet

Copyright Tudor Chartered Surveyors & Estate Agents. For room identification only.  
Plan produced using PlanUp.

**5 Fron Hyfryd, Llithfaen, Pwllheli**



# Tudor

Plas Y Ward, Y Maes, Pwllheli, Gwynedd, LL53 5DA  
T: 01758 701 100  
E: [info@huwtudor.co.uk](mailto:info@huwtudor.co.uk)  
[www.huwtudor.co.uk](http://www.huwtudor.co.uk)